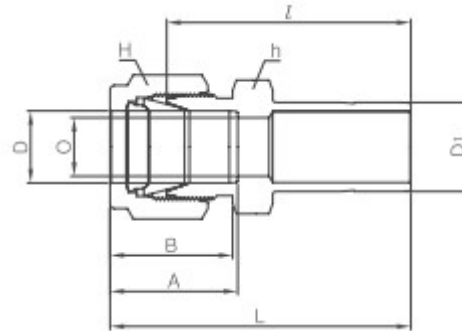


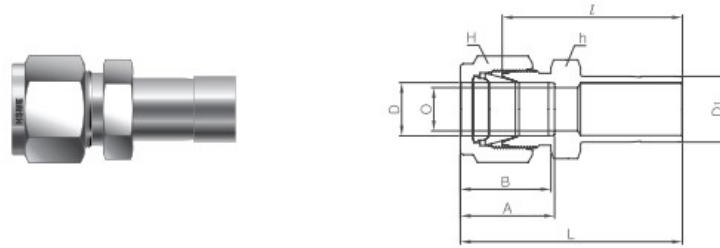
### Connects fractional tube to fractional M Tube fitting port

Part No.	Tube O.D.				O Min	Width Across Flat							
	D		D1			h		H		A	B	I	L
	in	mm	in	mm		in	mm	in	mm				
AR1-2	1/16	1.59	1/8	3.17	1.27	5/16	7.93	5/16	7.93	8.63	10.92	25.4	29.21
AR1-4	1/16	1.59	1/4	6.35	1.27	5/16	7.93	5/16	7.93	8.63	10.92	27.68	31.49
AR2-1	1/8	3.17	1/16	1.59	1.76	7/16	11.11	7/16	11.11	12.7	15.24	22.35	28.95
AR2-2	1/8	3.17	1/8	3.17	2.03	7/16	11.11	7/16	11.11	12.7	15.24	26.92	33.52
AR2-3	1/8	3.17	3/16	4.76	2.28	7/16	11.11	7/16	11.11	12.7	15.24	27.68	34.29
AR2-4	1/8	3.17	1/4	6.35	2.28	7/16	11.11	7/16	11.11	12.7	15.24	29.46	36.06
AR2-6	1/8	3.17	3/8	9.52	2.28	7/16	11.11	7/16	11.11	12.7	15.24	30.98	37.59
AR2-8	1/8	3.17	1/2	12.7	2.28	9/16	14.28	7/16	11.11	12.7	15.24	37.59	44.19
AR3-2	3/16	4.76	1/8	3.17	2.03	7/16	11.11	1/2	12.7	13.71	16	28.19	34.79
AR3-4	3/16	4.76	1/4	6.35	3.04	7/16	11.11	1/2	12.7	13.71	16	30.48	37.08
AR4-2	1/4	6.35	1/8	3.17	2.03	1/2	12.7	9/16	14.28	15.24	17.78	29.46	36.83
AR4-3	1/4	6.35	3/16	4.76	3.04	1/2	12.7	9/16	14.28	15.24	17.78	30.22	37.59
AR4-4	1/4	6.35	1/4	6.35	4.82	1/2	12.7	9/16	14.28	15.24	17.78	31.75	39.11
AR4-5	1/4	6.35	5/16	7.93	4.82	1/2	12.7	9/16	14.28	15.24	17.78	32.51	39.87
AR4-6	1/4	6.35	3/8	9.52	4.82	1/2	12.7	9/16	14.28	15.24	17.78	33.27	40.64
AR4-8	1/4	6.35	1/2	12.7	4.82	9/16	14.28	9/16	14.28	15.24	17.78	38.86	46.22
AR4-10	1/4	6.35	5/8	15.87	4.82	11/16	17.46	9/16	14.28	15.24	17.78	40.64	48
AR4-12	1/4	6.35	3/4	19.05	4.82	13/16	20.64	9/16	14.28	15.24	17.78	40.38	47.75
AR5-6	5/16	7.93	3/8	9.52	6.35	9/16	14.28	5/8	15.87	16.25	18.54	34.54	41.91
AR5-8	5/16	7.93	1/2	12.7	6.35	9/16	14.28	5/8	15.87	16.25	18.54	40.13	47.49
AR6-4	3/8	9.52	1/4	6.35	4.82	5/8	15.87	11/16	17.46	16.76	19.3	34.03	41.4
AR6-6	3/8	9.52	3/8	9.52	7.11	5/8	15.87	11/16	17.46	16.76	19.3	35.81	43.18
AR6-8	3/8	9.52	1/2	12.7	7.11	5/8	15.87	11/16	17.46	16.76	19.3	41.14	45.81
AR6-10	3/8	9.52	5/8	15.87	7.11	11/16	17.46	11/16	17.46	16.76	19.3	42.92	50.29
AR6-12	3/8	9.52	2/4	19.05	7.11	13/16	20.64	11/16	17.46	16.76	19.3	42.92	50.29
AR8-4	1/2	12.7	1/4	6.35	4.82	13/16	20.64	7/8	22.22	22.86	21.84	34.79	44.95
AR8-6	1/2	12.7	3/8	9.52	7.11	13/16	20.64	7/8	22.22	22.86	21.84	36.57	46.73
AR8-8	1/2	12.7	1/2	12.7	9.9	13/16	20.64	7/8	22.22	22.86	21.84	42.16	52.32
AR8-10	1/2	12.7	5/8	15.87	10.41	13/16	20.64	7/8	22.22	22.86	21.84	43.68	53.84
AR8-12	1/2	12.7	3/4	19.05	10.41	13/16	20.64	7/8	22.22	22.86	21.84	43.68	53.84
AR8-16	1/2	12.7	1	25.4	10.41	1-1/16	26.98	7/8	22.22	22.86	21.84	50.03	60.19
AR10-12	5/8	15.87	3/4	19.05	12.7	15/16	23.81	1	25.4	24.38	21.84	44.45	54.61
AR10-14	5/8	15.87	7/8	22.22	12.7	15/16	23.81	1	25.4	24.38	21.84	45.97	56.13
AR10-16	5/8	15.87	1	25.4	12.7	1-1/16	26.98	1	25.4	24.38	21.84	50.8	60.96
AR12-8	3/4	19.05	1/2	12.7	9.9	1-1/16	26.98	1-1/8	28.57	24.38	21.84	44.45	54.61
AR12-16	3/4	19.05	1	25.4	15.74	1-1/16	26.98	1-1/8	28.57	24.38	21.84	52.32	62.48
AR16-20	1	25.4	1-1/4	31.75	22.35	1-3/8	34.93	1-1/2	38.1	31.24	26.41	68.32	80.51
AR16-24	1	25.4	1-1/2	38.1	22.35	1-5/8	41.28	1-1/2	38.1	31.24	26.41	76.96	89.15
AR16-32	1	25.4	2	50.8	22.35	2-1/8	53.98	1-1/2	38.1	31.24	26.41	100.33	112.52
AR20-24	1-1/4	31.75	1-1/2	38.1	27.68	1-7/8	47.63	1-7/8	57.15	41.14	38.86	82.04	104.14
AR20-32	1-1/4	31.75	2	50.8	27.68	1-7/8	47.63	1-7/8	76.2	41.14	38.86	103.12	125.22
AR-24-32	1-1/2	38.1	2	50.8	34.03	2-1/4	57.15	2-1/4	76.2	50.03	45.21	104.14	131.31



### Connects metric tube to fractional M Tube fitting port

Part No.	Tube O.D.			O Min	Width Across Flat		A	B	I	L
	D	D1			h	H				
		in	mm							
AR2M-2	2	1/8	3.17	1.7	12	12	12.9	15.3	26.9	33.5
AR3M-2	3	1/8	3.17	2	12	12	12.9	15.3	26.9	33.5
AR3M-4	3	1/4	6.35	2.4	12	12	12.9	15.3	29.5	36.1
AR4M-4	4	1/4	6.35	2.4	12	12	13.7	16.1	30.5	37.1
AR6M-2	6	1/8	3.18	2	14	14	15.3	17.7	29.5	36.9
AR6M-4	6	1/4	6.35	4.8	14	14	15.3	17.7	31.8	39.2
AR6M-5	6	5/16	7.93	4.8	14	14	15.3	17.7	32.5	39.9
AR6M-6	6	3/8	9.52	4.8	14	14	15.3	17.7	33.3	40.7
AR6M-8	6	1/2	12.7	4.8	14	14	15.3	17.7	38.9	46.3
AR8M-6	8	3/8	9.52	6.4	15	16	16.2	18.6	34.5	42
AR8M-8	8	1/2	12.7	6.4	15	16	16.2	18.6	40.1	47.6
AR10M-6	10	3/8	9.52	7.1	18	19	17.2	19.5	36.6	44.2
AR10M-8	10	1/2	12.7	7.9	18	19	17.2	19.5	42.2	49.8
AR12M-8	12	1/2	12.7	9.5	22	22	22.8	22	42.2	52.3
AR12M-12	12	3/4	19.05	9.5	22	22	22.8	22	43.7	53.8
AR18M-12	18	3/4	19.05	15.1	27	30	24.4	22	46	56.1
AR18M-16	18	1	25.4	15.1	27	30	24.4	22	52.3	62.4
AR25M-16	25	1	25.4	20.2	35	38	31.3	26.5	57.2	69.5



### Connects metric tube to metric M Tube fitting port

Part No.	Tube O.D.		O Min	Width Across Flat		A	B	I	L
	D1	D		h	H				
AR2M-3M	2	3	1.7	12	12	12.9	15.3	26.9	35.3
AR3M-4M	3	4	2.4	12	12	12.9	15.3	28.4	35
AR3M-6M	3	6	2.4	12	12	12.9	15.3	29.5	36.1
AR3M-10M	3	10	2.4	12	12	12.9	15.3	31.8	38.4
AR4M-6M	4	6	2.4	12	12	13.7	16.1	30.5	37.1
AR6M-3M	6	3	1.8	14	14	15.3	17.7	29.5	36.9
AR6M-8M	6	8	4.8	14	14	15.3	17.7	32.5	39.9
AR6M-10M	6	10	4.8	14	14	15.3	17.7	33.3	40.7
AR6M-12M	6	12	4.8	14	14	15.3	17.7	38.9	46.3
AR8M-6M	8	6	4.6	15	16	16.2	18.6	32.8	40.3
AR8M-10M	8	10	6.4	15	16	16.2	18.6	34.5	42
AR8M-12M	8	12	6.4	15	16	16.2	18.6	40.1	47.6
AR10M-6M	10	6	4.6	18	19	17.2	19.5	34.8	42.4
AR10M-12M	10	12	7.9	18	19	17.2	19.5	42.2	49.8
AR10M-15M	10	15	7.9	18	19	17.2	19.5	43.7	51.3
AR10M-18M	10	18	7.9	19	19	17.2	19.5	43.7	51.3
AR12M-6M	12	6	4.6	22	22	22.8	22	34.8	44.9
AR12M-10M	12	10	7.7	22	22	22.8	22	36.6	46.7
AR12M-16M	12	16	9.5	22	22	22.8	22	43.7	53.8
AR12M-18M	12	18	9.5	22	22	22.8	22	43.7	53.8
AR12M-20M	12	20	9.5	22	22	22.8	22	46	56.1
AR12M-22M	12	22	9.5	24	22	22.8	22	46	56.1
AR12M-25M	12	25	9.5	27	22	22.8	22	52.3	62.4
AR16M-12M	16	12	9.1	24	25	24.4	22	42.9	53
AR18M-12M	18	12	9.1	27	30	24.4	22	44.5	54.6
AR18M-16M	18	16	12.7	27	30	24.4	22	46	56.1
AR18M-20M	18	20	15.1	27	30	24.4	22	47.5	57.6
AR18M-22M	18	22	15.1	27	30	24.4	22	47.5	57.6
AR18M-25M	18	25	15.1	27	30	24.4	22	52.3	62.4
AR20M-16M	20	16	12.7	30	32	26	22	47.8	57.9
AR20M-18M	20	18	13.9	30	32	26	22	47.8	57.9
AR20M-22M	20	22	15.8	30	32	26	22	49.3	59.4
AR20M-25M	20	25	15.8	30	32	26	22	54.1	64.2
AR22M-18M	22	18	13.9	30	32	26	22	47.8	57.9
AR22M-20M	22	20	15.1	30	32	26	22	49.3	59.4
AR22M-25M	22	25	18.3	30	32	26	22	54.1	64.2
AR25M-18M	25	18	13.9	35	38	31.3	26.5	50.8	63.1
AR25M-20M	25	20	15.1	35	38	31.3	26.5	52.3	64.6